



WEBINAR #1

FSC CONVERSION REMEDY

PROCEDURE

Version 1-0 Draft 2-0

24 June 2021

Housekeeping rules



This is the panel you see

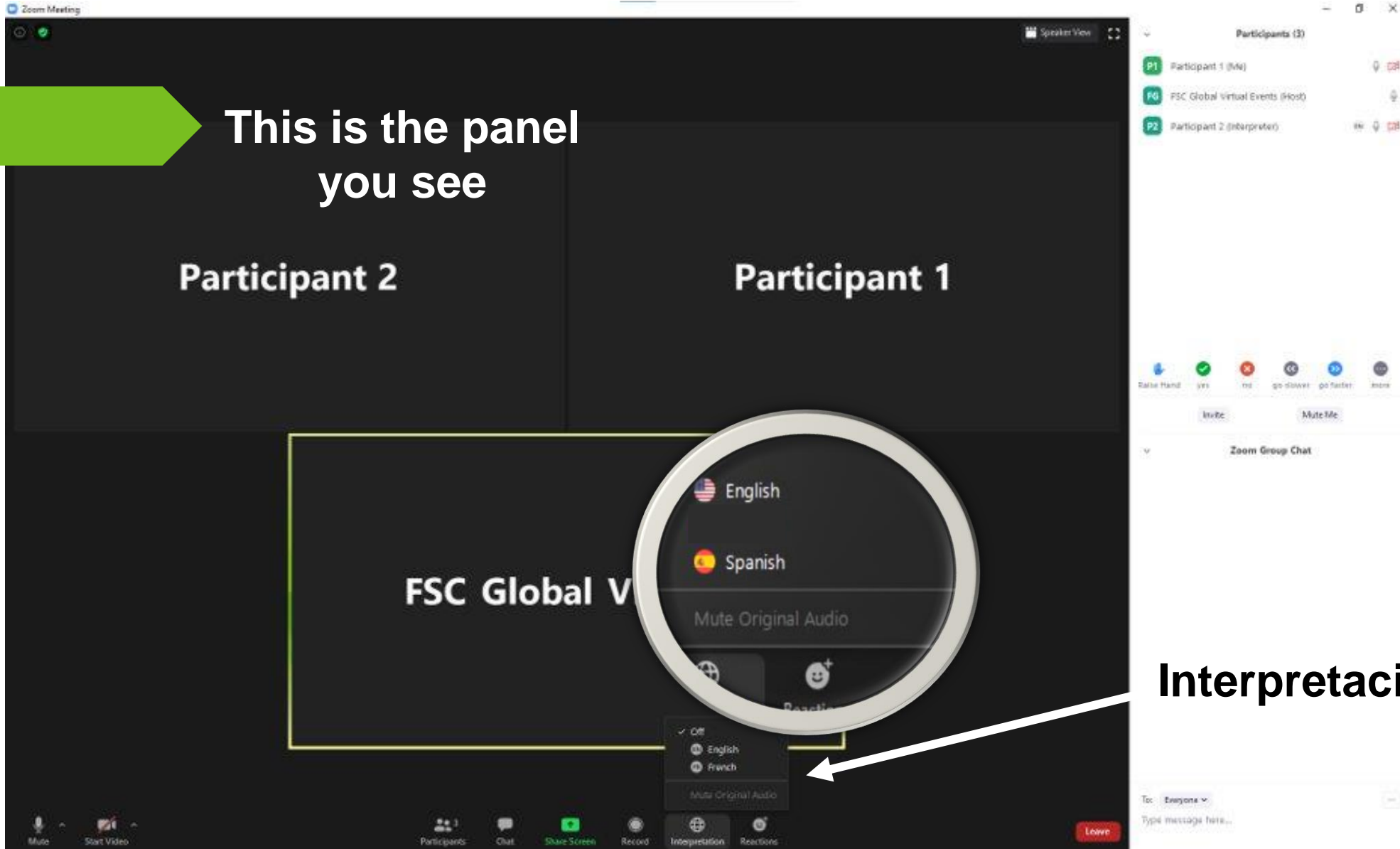
Participant 2

Participant 1

FSC Global V



Interpretación



CONTENT

WHY. HOW. WHAT. Q&A

Introducing you the second draft of
FSC Conversion Remedy Procedure

WHY THE PROCEDURE?

History of discussion on conversion in FSC, background of conversion policy and conversion remedy procedure.

WHY CONVERSION POLICY?

2008



PLANTATION REVIEW

FSC convened Expert team D to develop analysis and proposal on conversion rules.

GA 2011

Motion 18 requested that a chamber-balanced working group shall be established



2011

2014



GA 2014

Motion 12 asked FSC to fast-track the implementation of motion 18

GA 2017

Motion 7: Membership requested FSC to develop a holistic policy on conversion, and appropriate treatment at P&C and indicators levels.



2017

Read FSC Green paper on conversion [here](#) for further information.

POLICY

WG

AUG 2018

MAR 2022

- 1. 1994 cut-off date
- 2. Principles for compensation on past conversion
- 3. Concept of acceptable conversion

- Dr. Marcus Colchester
- Dr. Verma
- Annika Terrana
- Michal Zrust
- Justin Mercer
- Francisco Rodriguez

- Caitlin Clarke
- Dr. Michael Brady
- Karen Kirkman
- Prof. Vera Engel Lex

DEC 2020

TWG

NOV 2019

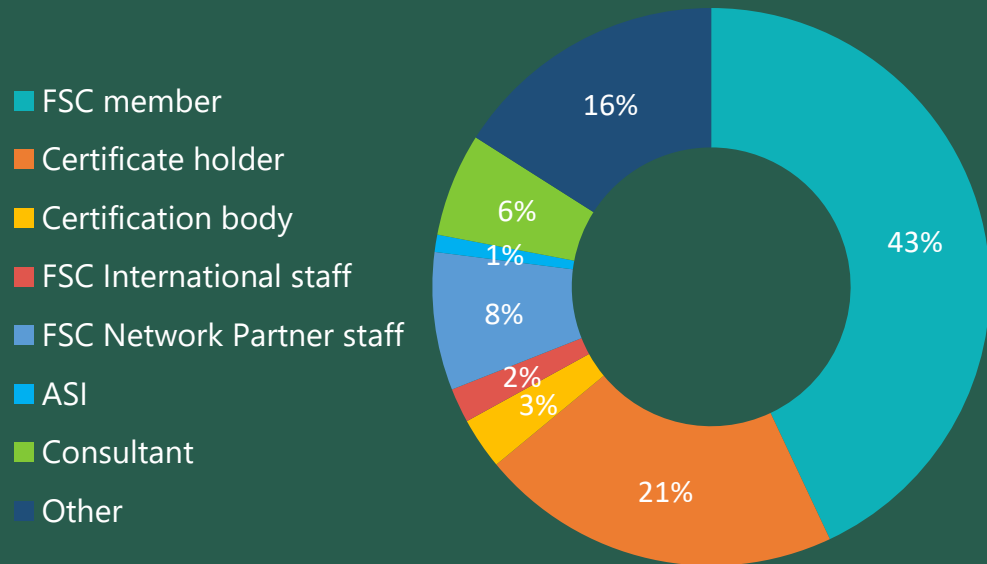
- 1. Criteria, indicators and thresholds for conversion
- 2. Develop a conversion remedy procedure

PROCEDURE

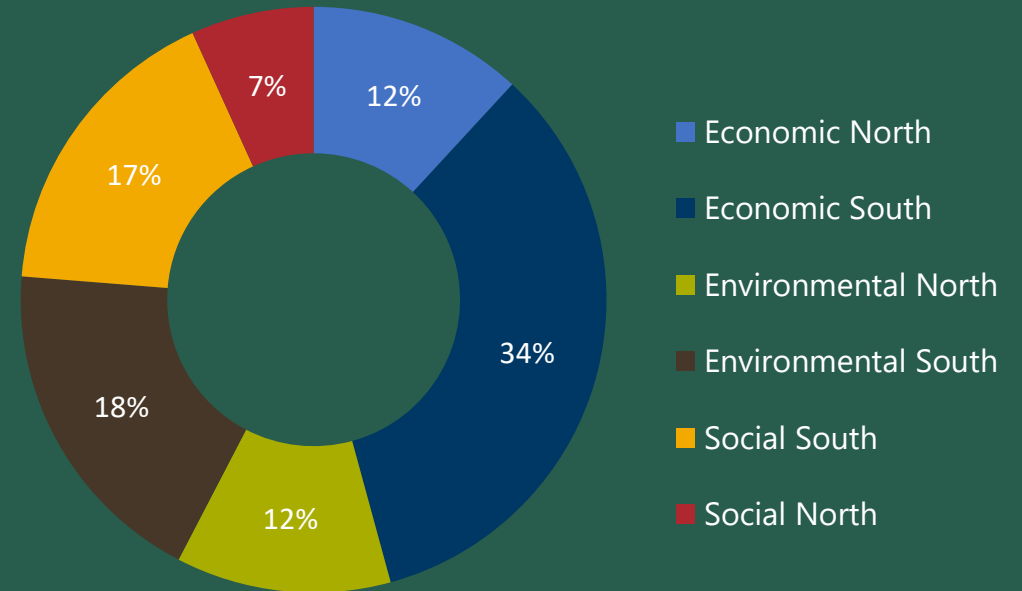
1ST PUBLIC CONSULTATION ON THE PROCEDURE

APRIL – JUNE 2020 WITH 135 PARTICIPANTS FROM 38 COUNTRIES

OVERVIEW OF CONSULTATION PARTICIPATION

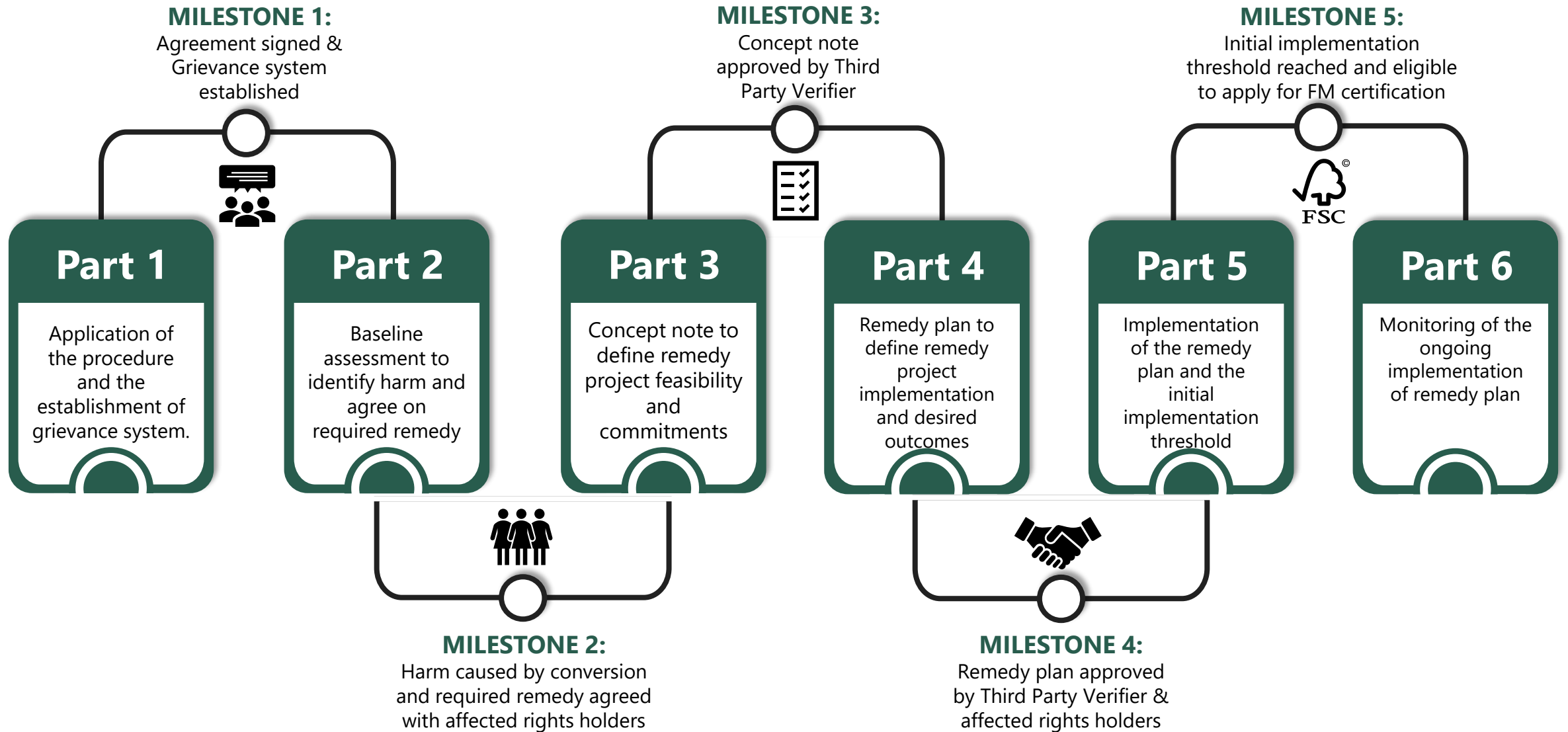


FSC SUB-CHAMBER BASED PARTICIPATION

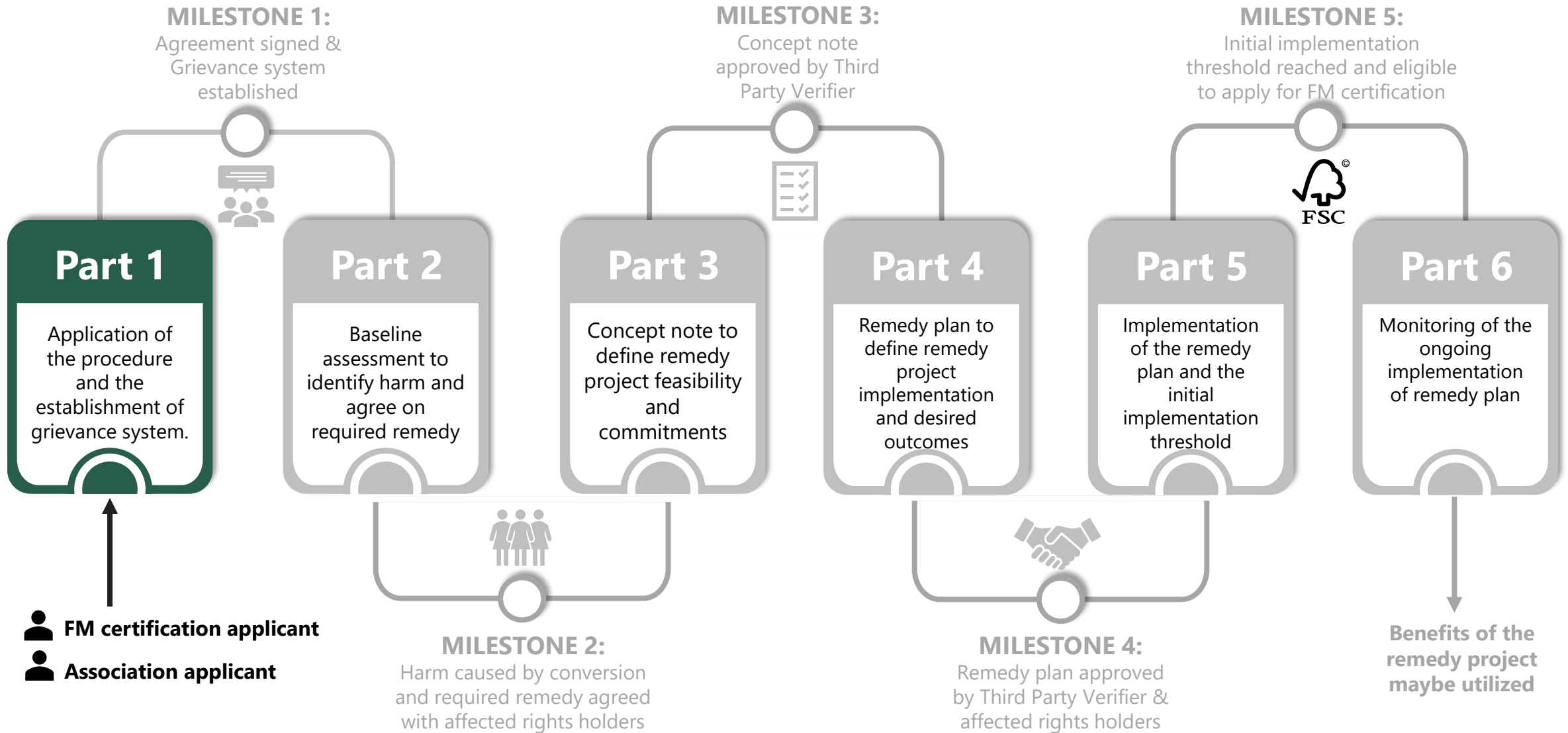


Please refer to the synopsis report available [here](#) to view results from the 1st public consultation, and to understand how the Motion 7 Technical Working Group (TWG) considered these comments during the development of the second draft procedure.

THE STRUCTURE OF THE PROCEDURE



THE STRUCTURE OF THE PROCEDURE



PART 1_D1-0



Cut-off rule

Policy on Conversion Draft 2-0



Small-scale smallholders

Dispensation criteria

GENERAL PRINCIPLES

PART 1_D2-0



Cut-off rule

Policy on Conversion Draft 4-0



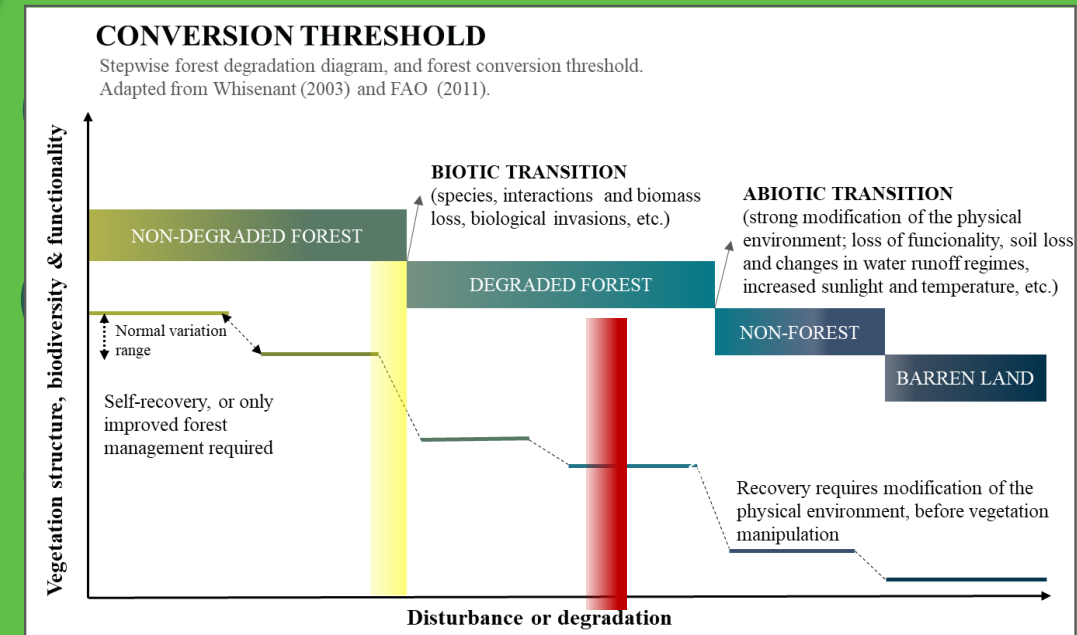
Small-scale smallholders

Dispensation criteria

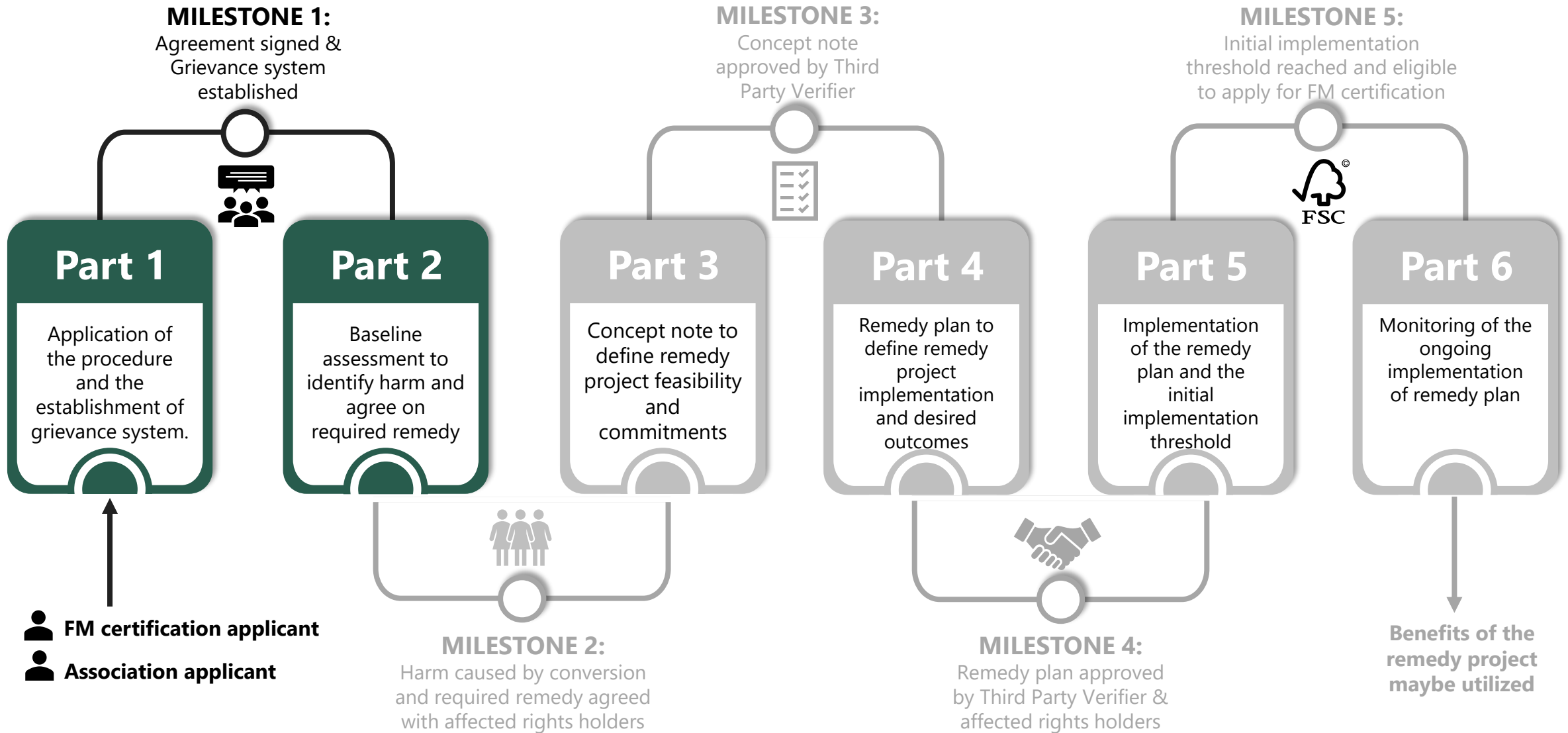


Conversion threshold

Determine the constitution of conversion



THE STRUCTURE OF THE PROCEDURE



PART 2_D2-0



Baseline assessment report

- Findings and analysis of environmental and *social harm** caused by *conversion**
- Site selection and proposed remedy actions
- Identified affected rights holder, affected stakeholders



Site selection & remedy action

- *Additionality** and *longevity**
- *proportionality** and *equivalence**
- Maximize *conservation** outcomes and social benefits
- Prioritization of site selection
- Social remedy shall consist of agreed processes with affected rights holders*



Converted area

Identification and mapping



Affected rights holders & affected stakeholders

Identification by *independent assessor**



Social baseline by Independent assessors

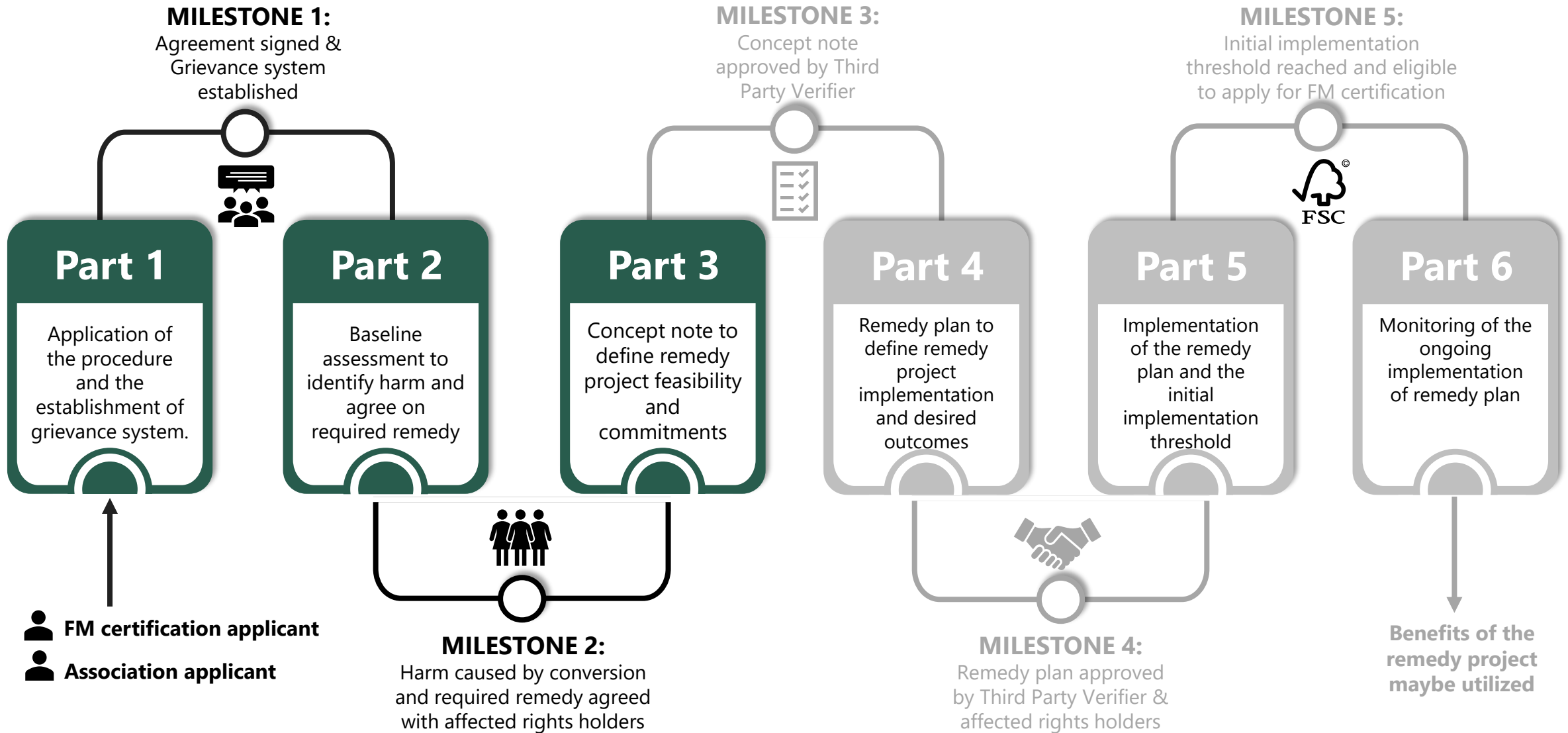
- Social and cultural values
- Legal and *customary rights** to land
- Livelihoods
- Violation of *human rights**
*Ecosystem services** lost within and emulating from the converted area.



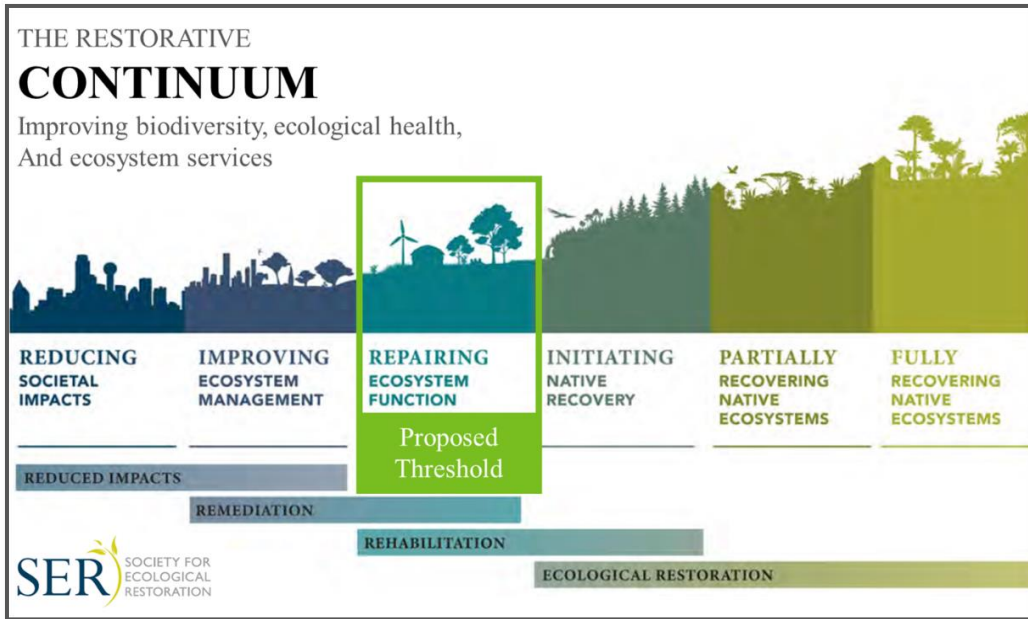
Environmental baseline

- The size of the converted area
- The quality, forest condition including levels of degradation
- *Ecosystem attributes** lost

THE STRUCTURE OF THE PROCEDURE

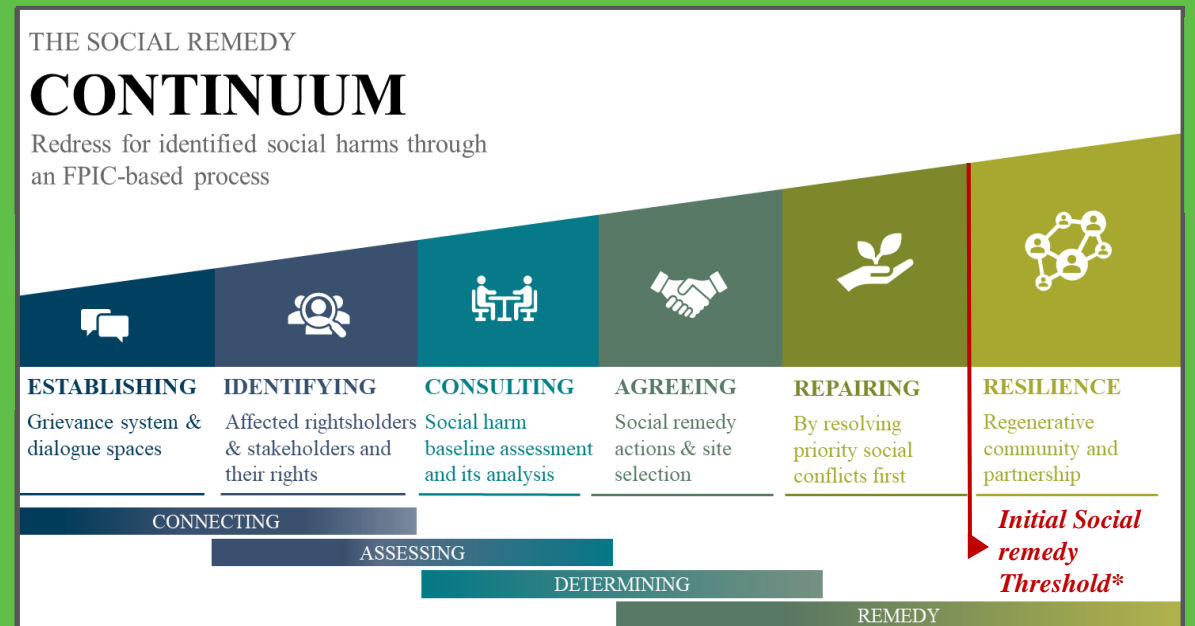
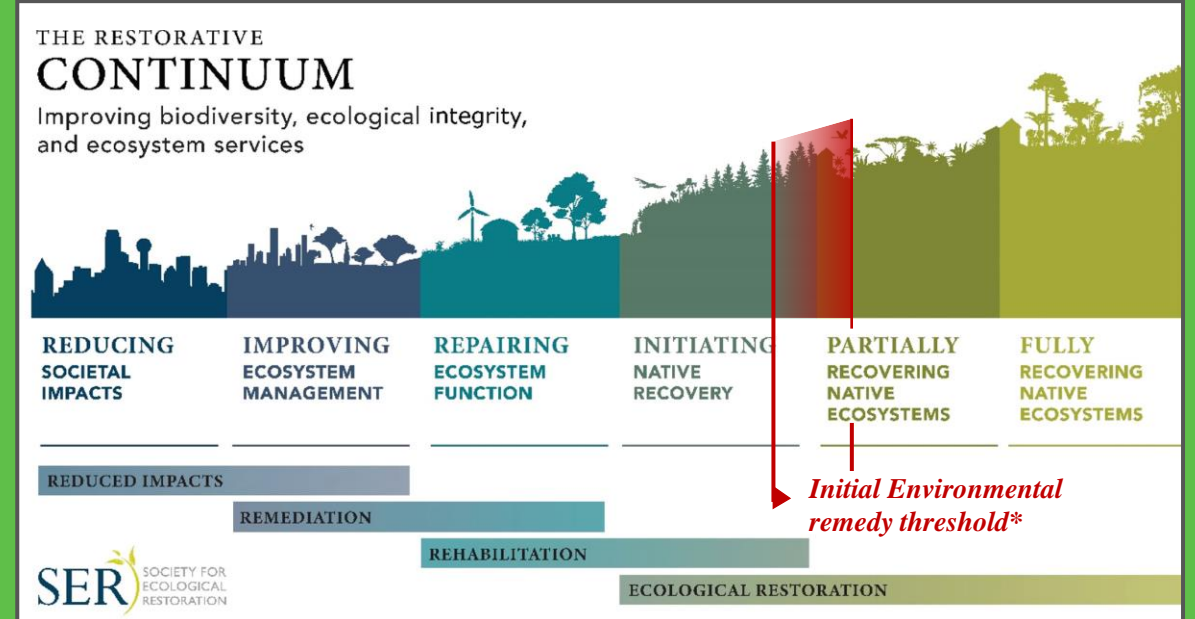


PART 3_D1-0

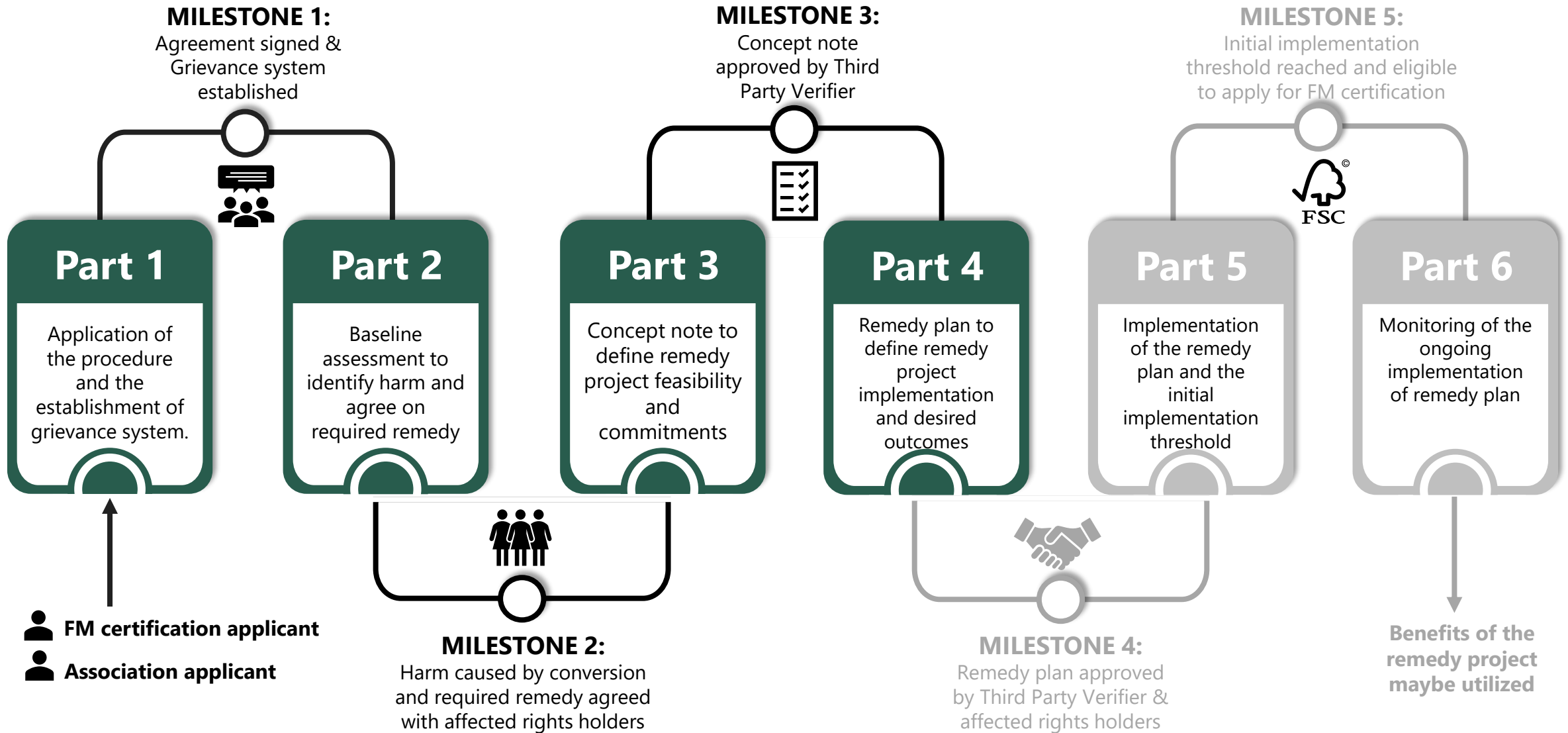


Concept note, baseline assessment report & FPIC agreements verified by **Third Party Verifier (TPV)**

PART 3_D2-0



THE STRUCTURE OF THE PROCEDURE

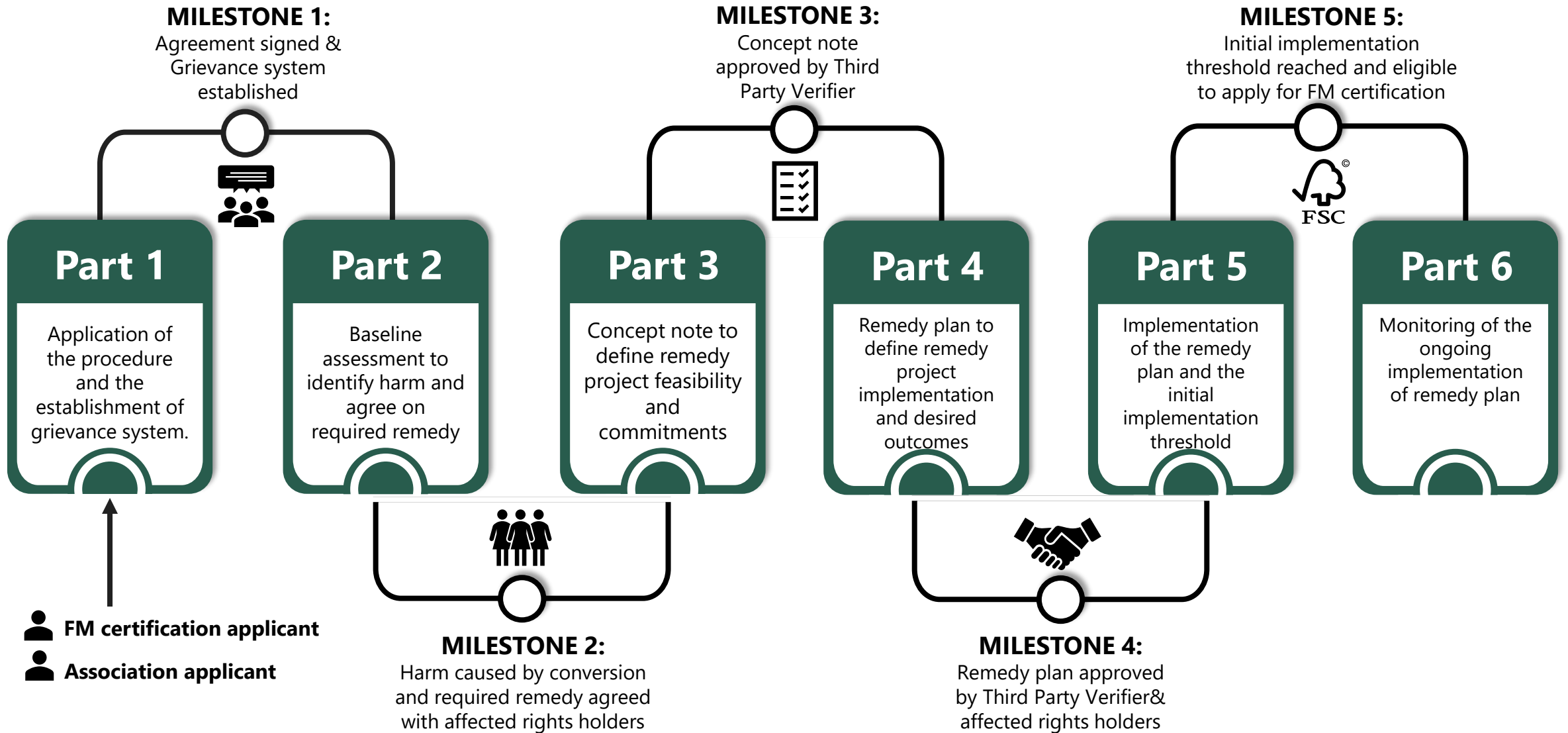


PART 4_D2-0



Adapted from SER International Standards (Gann et al., 2019)

THE STRUCTURE OF THE PROCEDURE



Organization shall implement the remedy plan and achieve initial implementation threshold*

INITIAL THRESHOLD



Organization shall continue the engagement with affected stakeholders and experts

AFFECTED STAKEHOLDERS



MEASURABLE INDICATORS



Organization shall re-start at concept note stage

STOP OR POSTPONE



Competent Authority and CBs' role and responsibilities in monitoring the remedy plan implementation

EXTERNAL MONITORING



END GOAL

Remedy shall continue until affected rights holders, affected stakeholders* and experts agree that the harm caused by the conversion* has been fully remediated as in remedy plan*

AFFECTED RIGHTS HOLDERS

Organization shall continue the engagement with affected rights holders, stakeholders and experts

MEASURABLE INDICATORS

Organization shall assess and monitor the implementation of environmental and social remedy against the Remedy Plan using identified indicators as requested*

STOP OR POSTPONE

Organization may resume the implementation (per affected rights holders' agreement) or may re-start at concept note stage

INTERNAL & EXTERNAL MONITORING

Organizations, TPV and CBs' role and responsibilities in monitoring the remedy plan implementation

[CONSULTATIONS](#)

[ABOUT](#)

[REGISTER](#)

[LOG IN](#)

PUBLIC CONSULTATION FOR FSC CONVERSION REMEDY PROCEDURE V1-0 D2-0

[Background: Motion 7 & its implementation](#)

[Part 3: Concept Note for the Remedy Plan](#)

[Introduction on second draft procedure](#)

[Part 4: Development of the Remedy Plan](#)

[FSC Conversion Remedy Procedure: Terms & Definitions](#)

[Part 5: Implementation of Remedy Plan](#)

[Part 1: General principles](#)

[Part 6: Ongoing monitoring of the Remedy Plan](#)

[Part 2: Social and environmental baseline assessment](#)

[Thank you for your participation](#)

[PARTICIPATE](#)

FINALIZATION OF THE PROCEDURE



JUN - JUL

PUBLIC CONSULTATION
3 Webinars



AUG-SEP

ONLINE MEETINGS
Analyze Feedbacks



OCT - NOV

**ONLINE MEETINGS &
INTENSIVE WEEK**
Develop final draft



DEC - MAR

**FINALIZATION &
SUBMISSION**
Submit final draft to
PSC & BoD

Q&A SESSION





Forest Stewardship Council®
FSC® International Center

Adenauerallee 134, 53113 Bonn, Germany

T +49 (0) 228 367 66-0

F +49 (0) 228 367 66-30

FSC International Center © All rights reserved

FSC® F000100

ic.fsc.org

